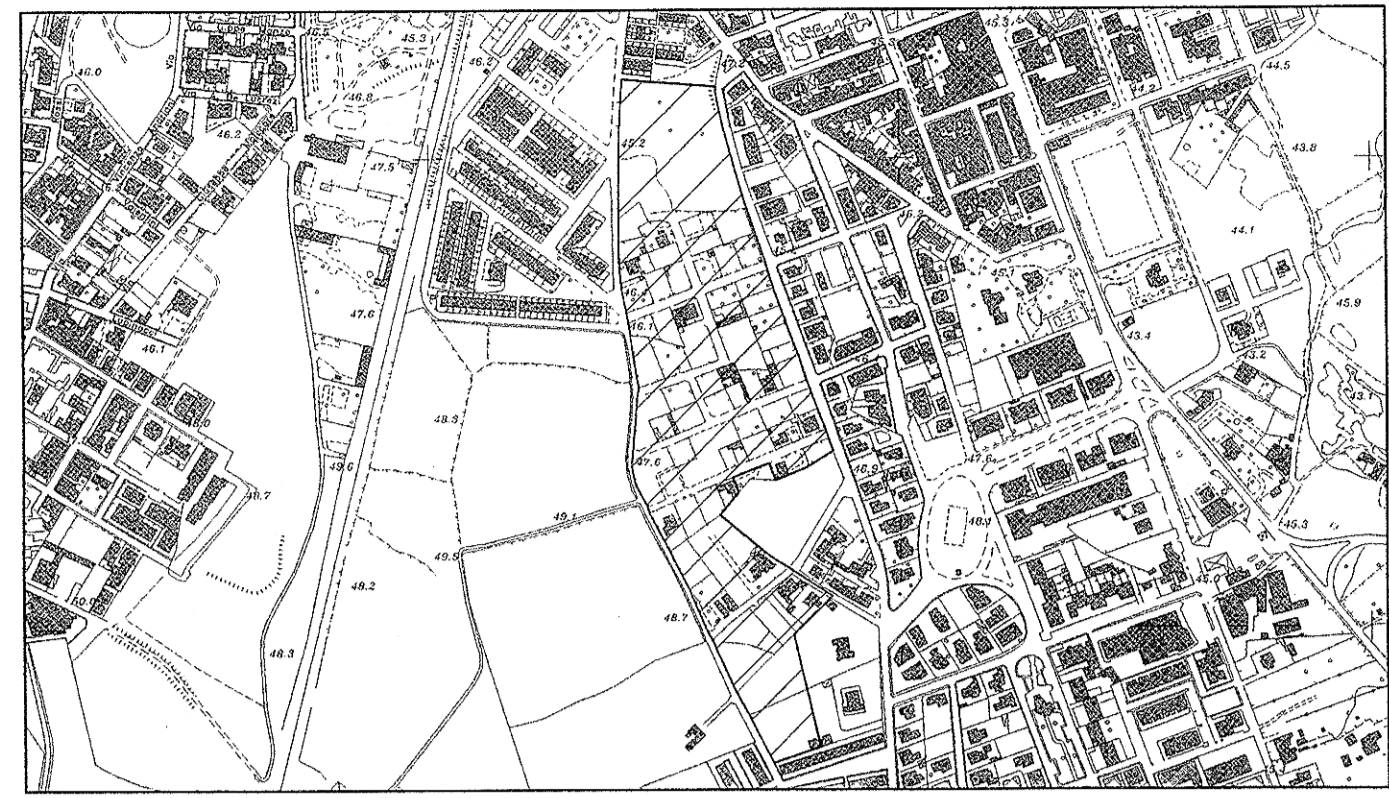


CITTA' DI CAVALLINO
 PROVINCIA DI LECCE

PROGETTO DI PIANO PARTICOLAREGGIATO
 - COMPARTO "L" -
 FRAZIONE DI CASTROMEDIANO



ELABORATO: TAVOLA

RILIEVO FOTOGRAFICO
 DELLO STATO DI FATTO

3

SCALA

1:1000

DATA

MARZO 2010

PROGETTISTI:

Dott. Ing. Giuseppe De Blasi Macchia

Dott. Arch. Paola Rosa Gigante




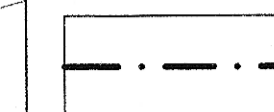
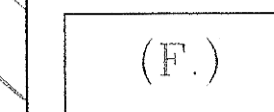
Geom. Antonio Caricato

CITTA' DI CAVALLINO (LE)

29 MAR 2010

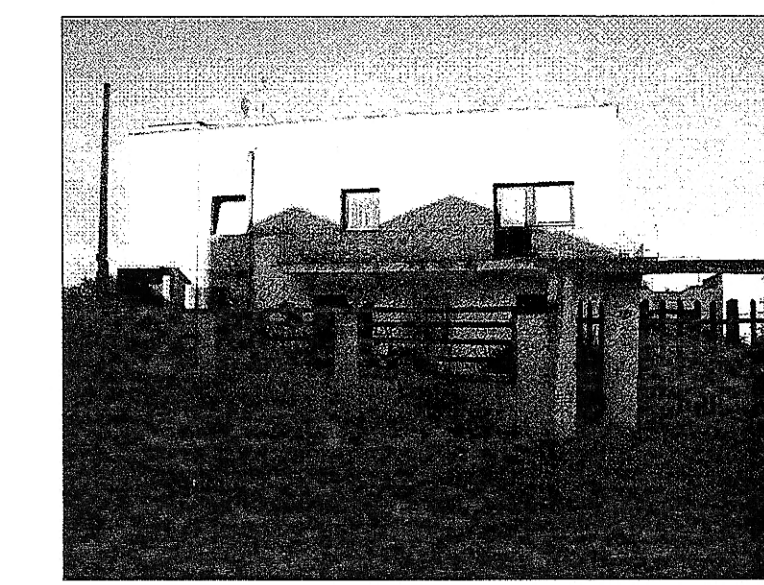
ARRIVO

LEGENDA

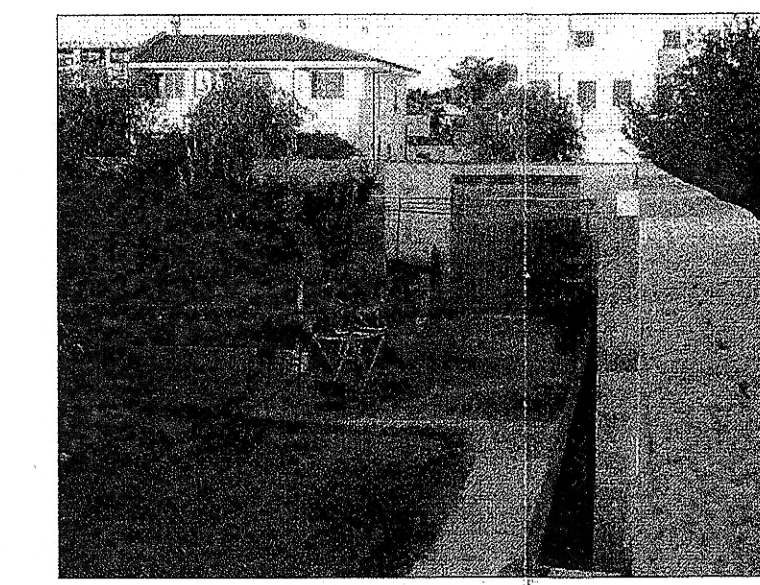
-  Fabbricati con domanda di condono edilizio
-  Fabbricati con C.E. in sanatoria
-  Fabbricati senza domanda di condono edilizio e C.E.
-  Limite comparto
-  Foto fabbricati



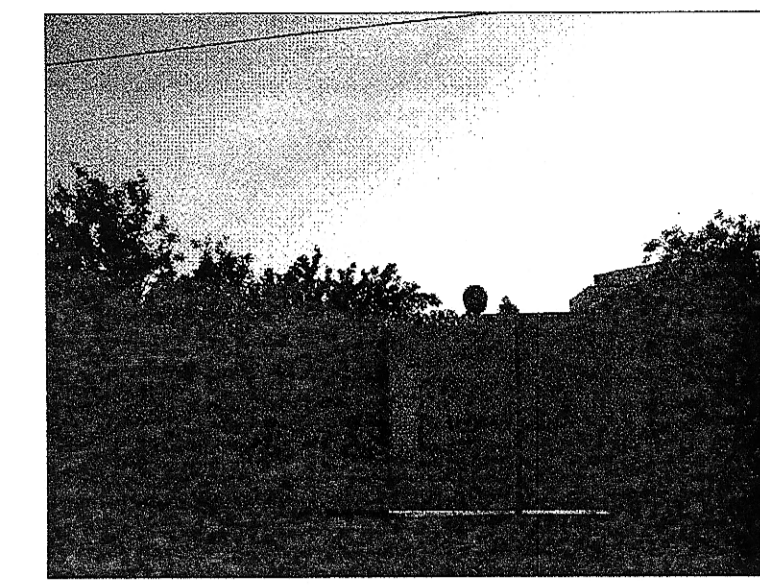
(FOTO N° 1)



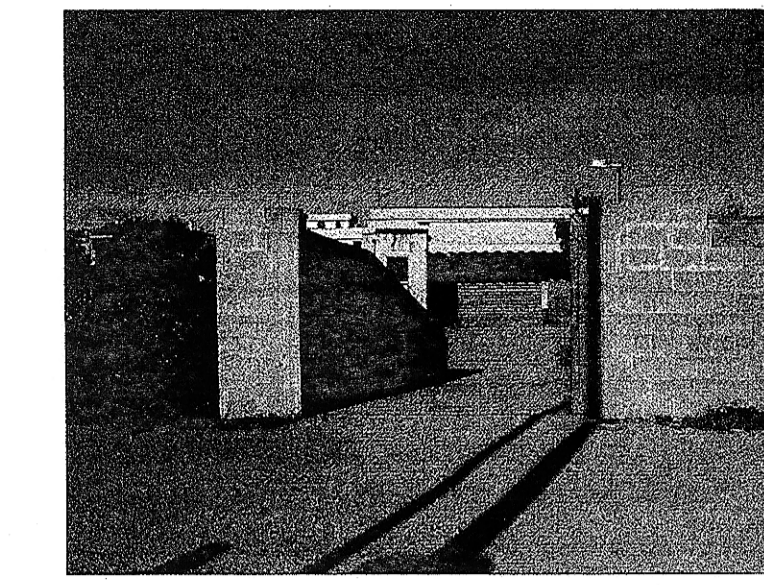
(FOTO N° 2)



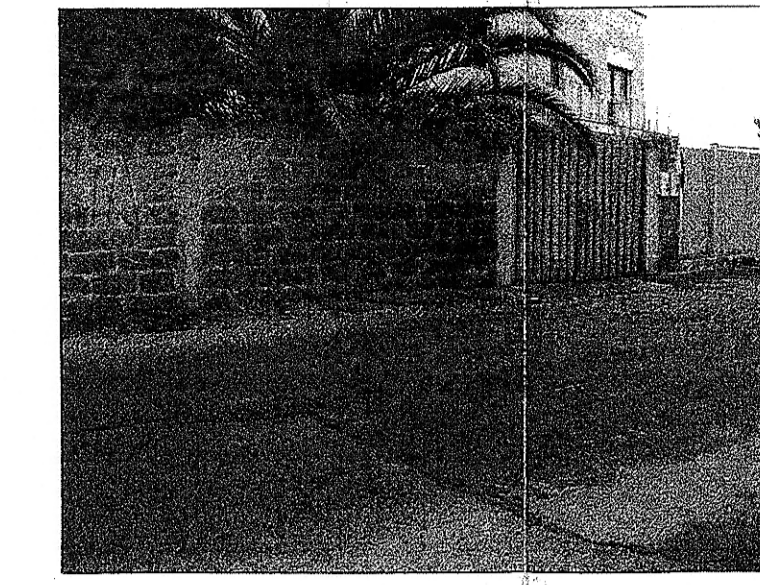
(FOTO N° 3)



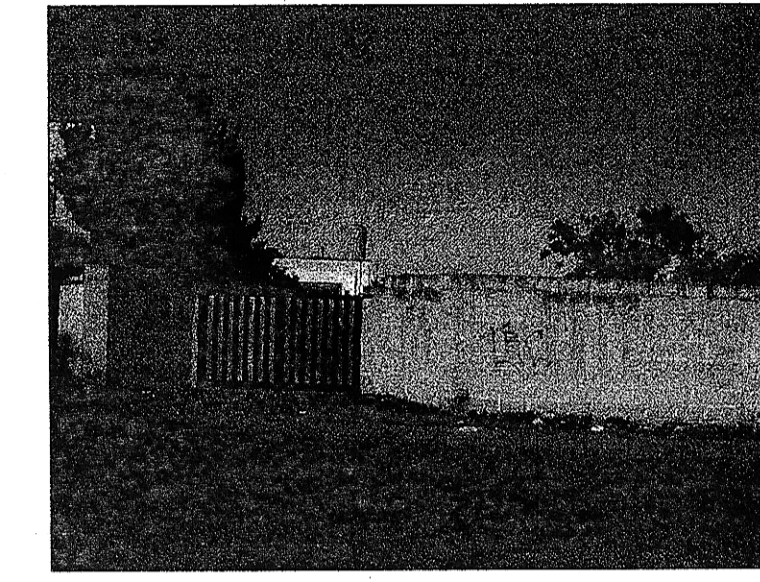
(FOTO N° 4)



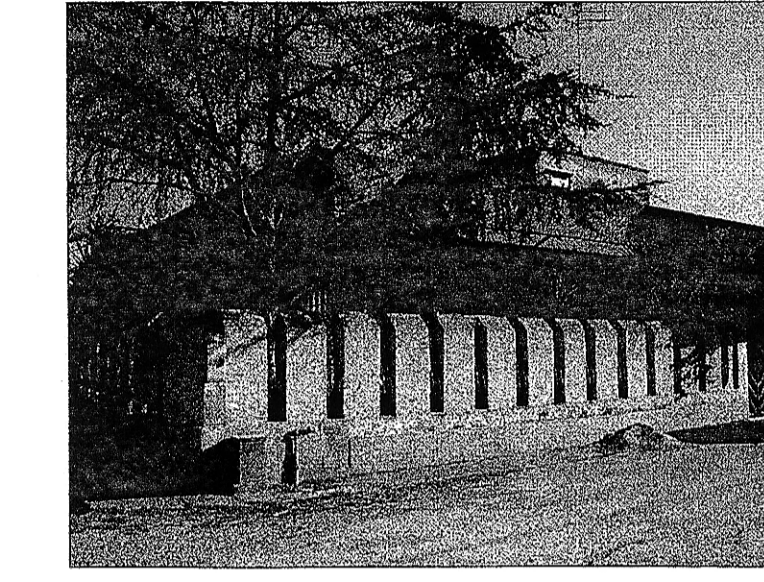
(FOTO N° 5)



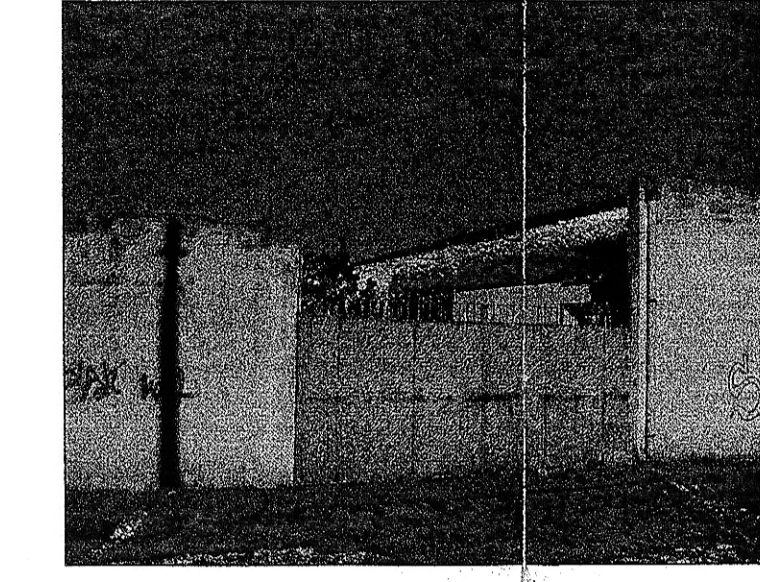
(FOTO N° 6)



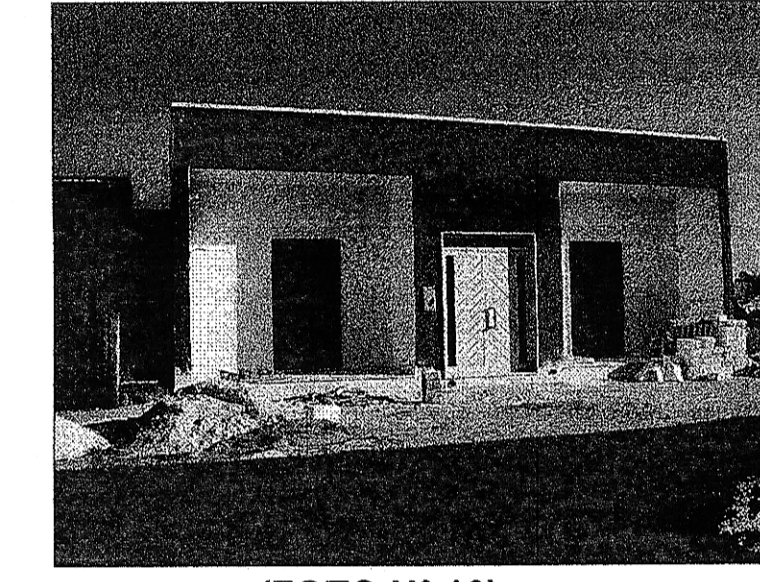
(FOTO N° 7)



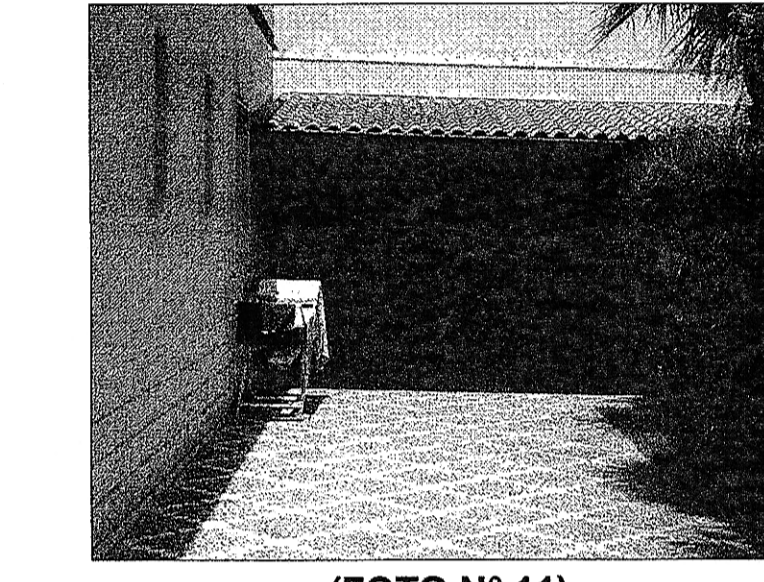
(FOTO N° 8)



(FOTO N° 9)



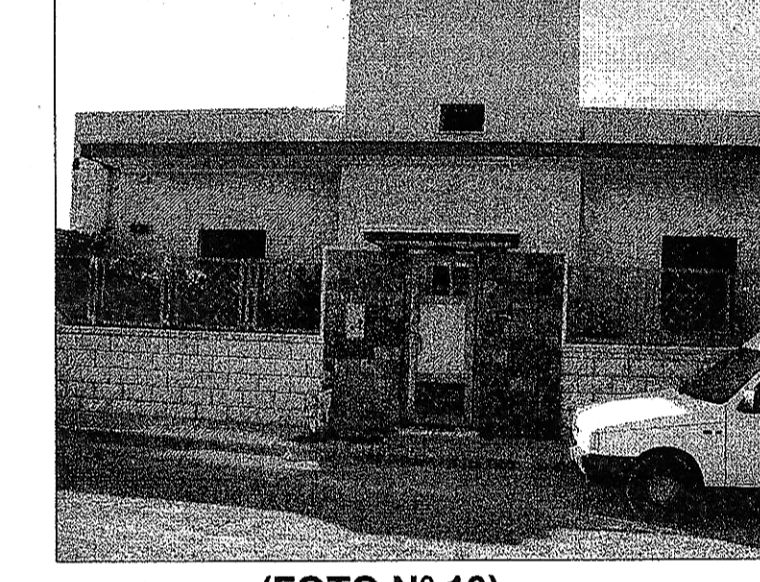
(FOTO N° 10)



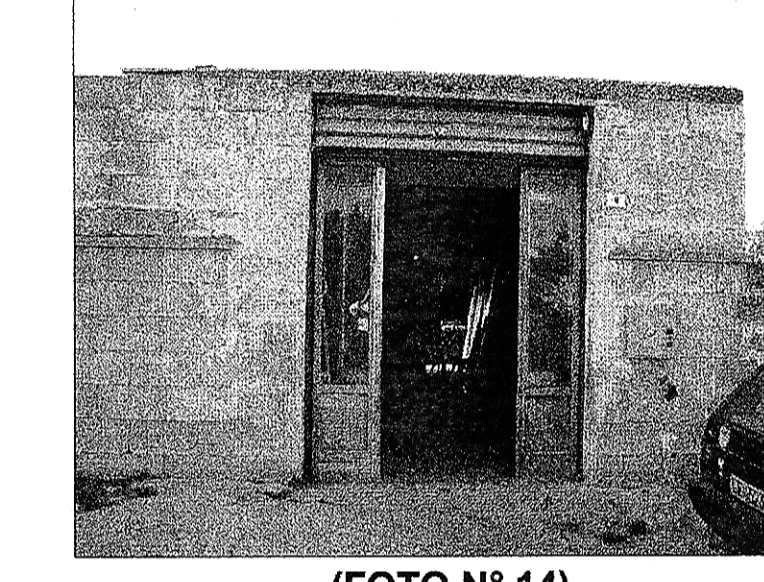
(FOTO N° 11)



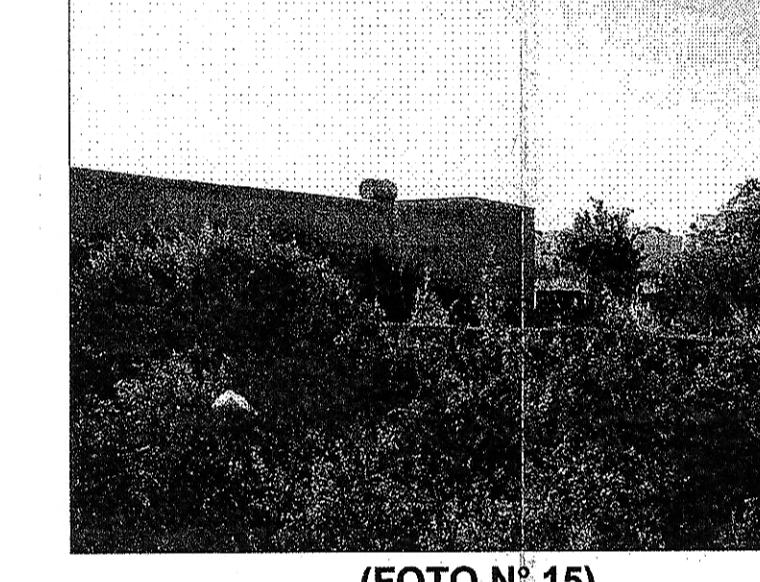
(FOTO N° 12)



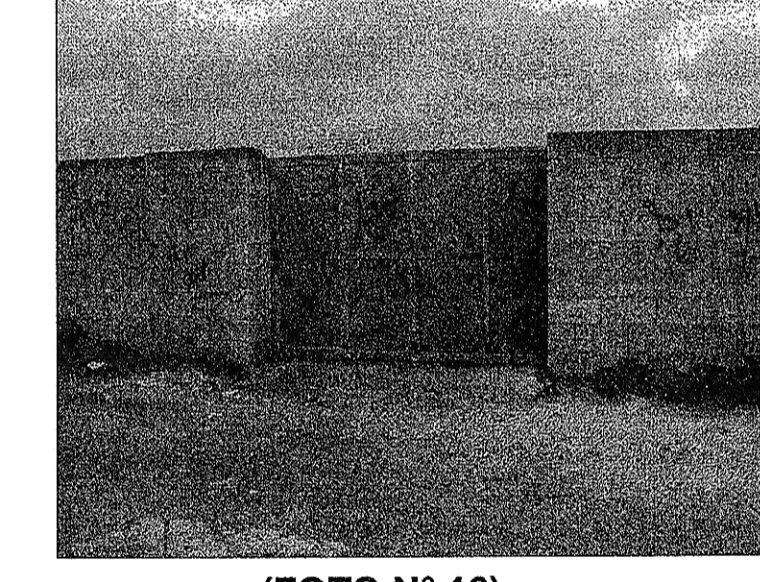
(FOTO N° 13)



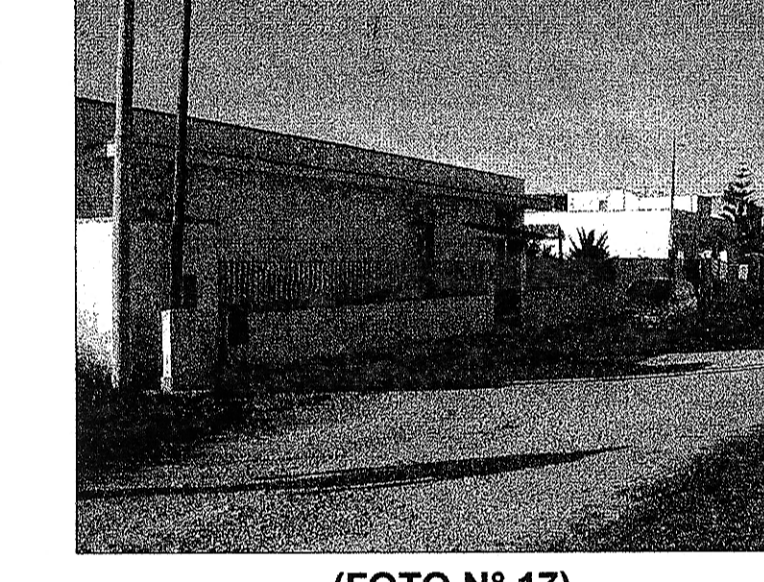
(FOTO N° 14)



(FOTO N° 15)



(FOTO N° 16)



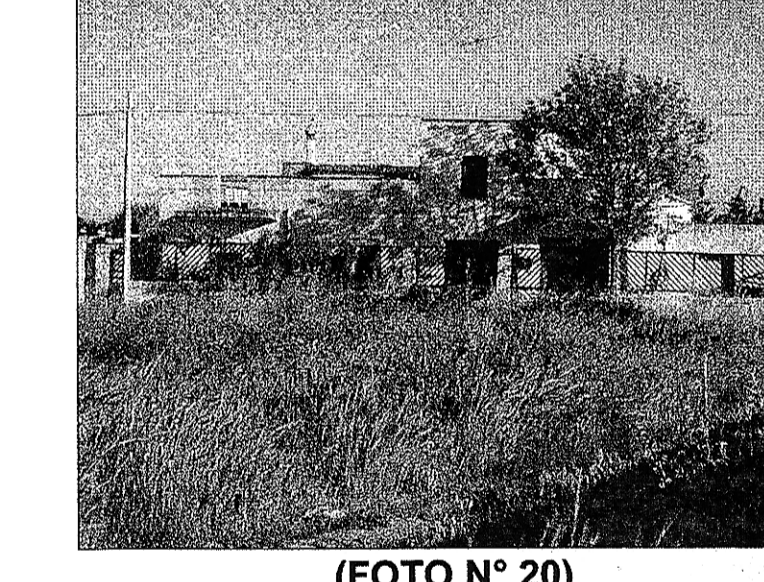
(FOTO N° 17)



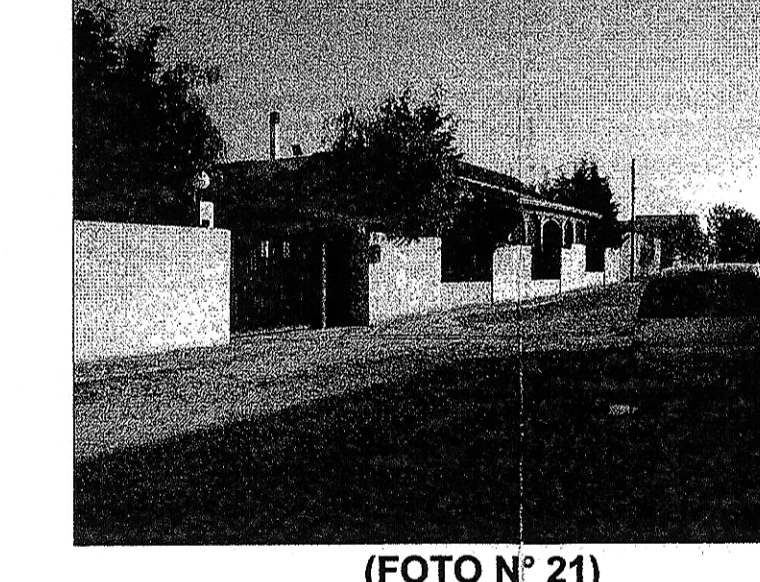
(FOTO N° 18)



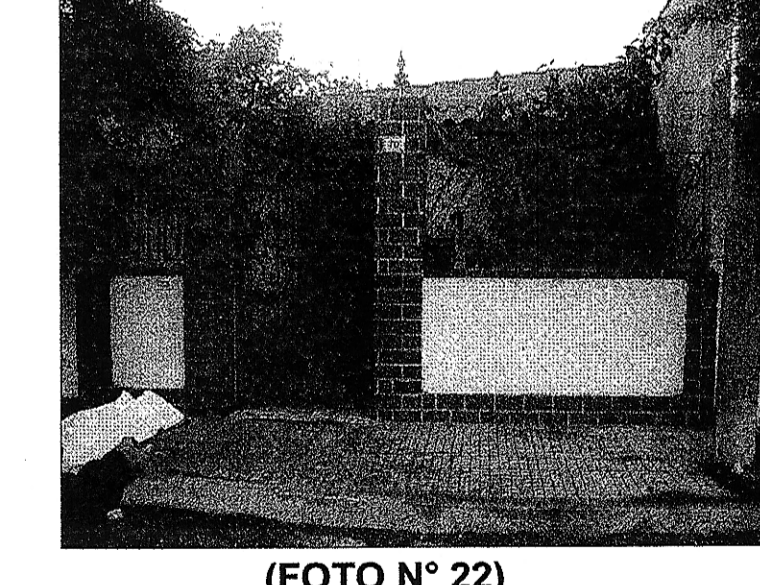
(FOTO N° 19)



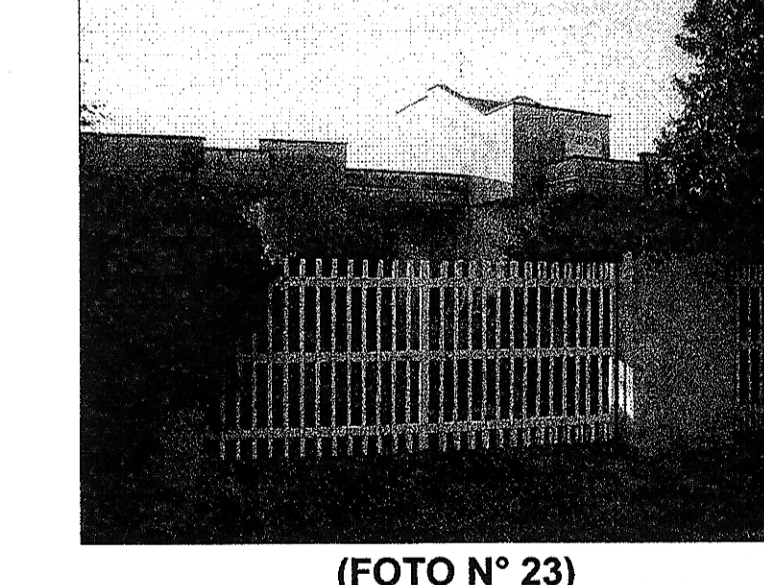
(FOTO N° 20)



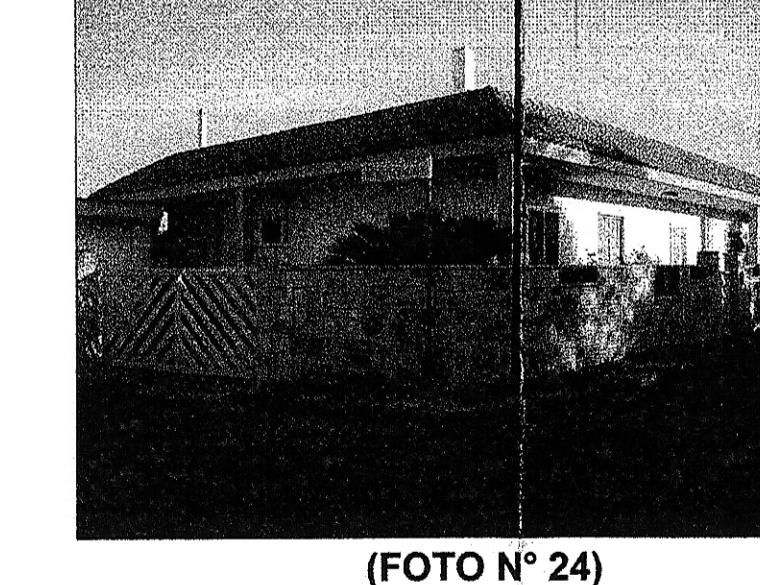
(FOTO N° 21)



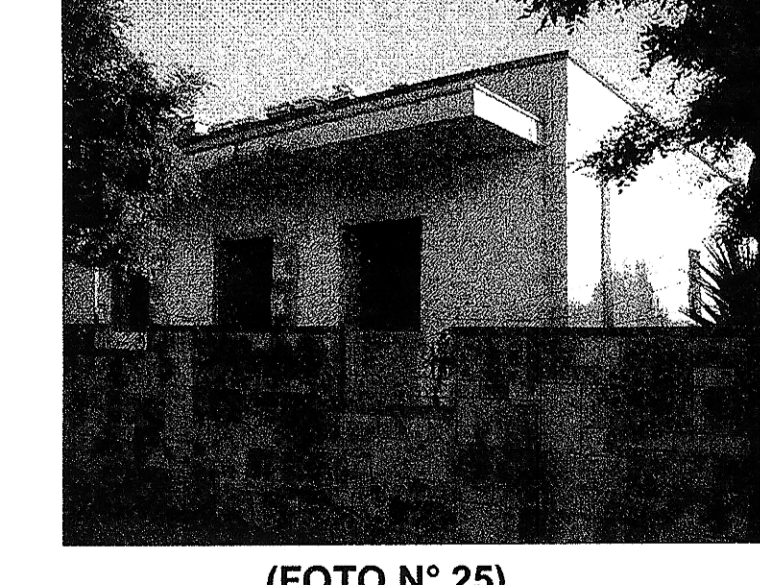
(FOTO N° 22)



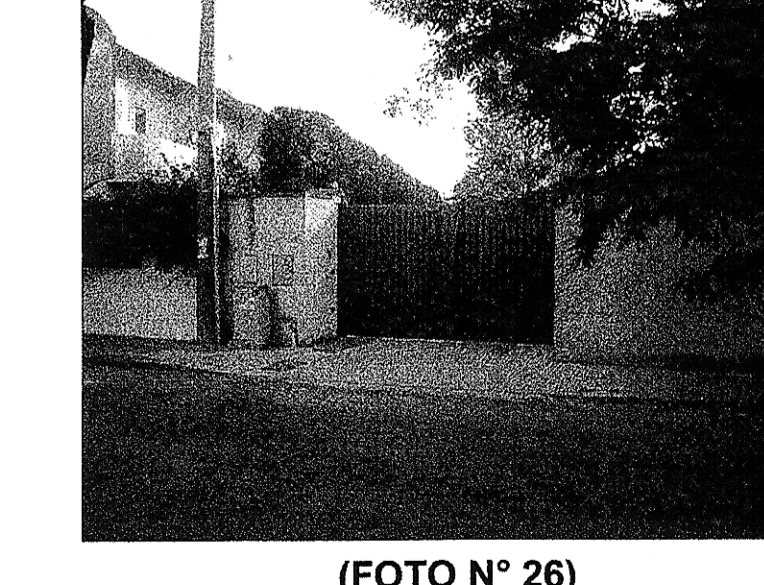
(FOTO N° 23)



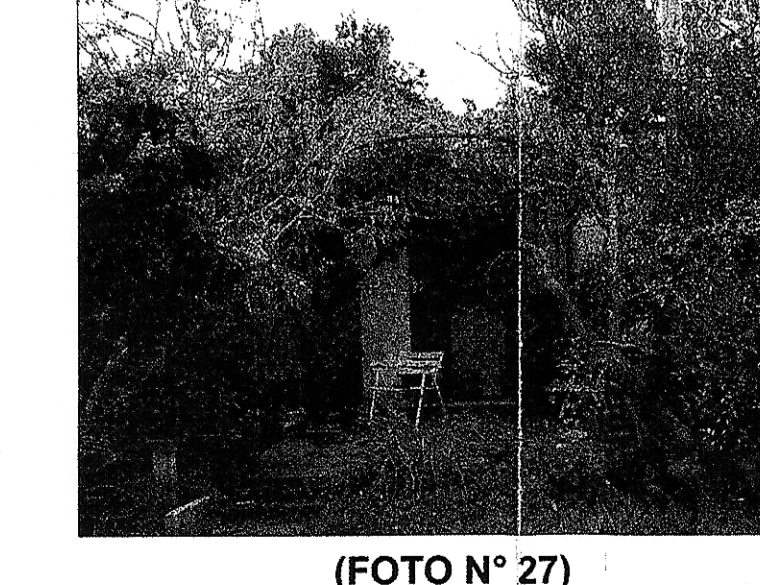
(FOTO N° 24)



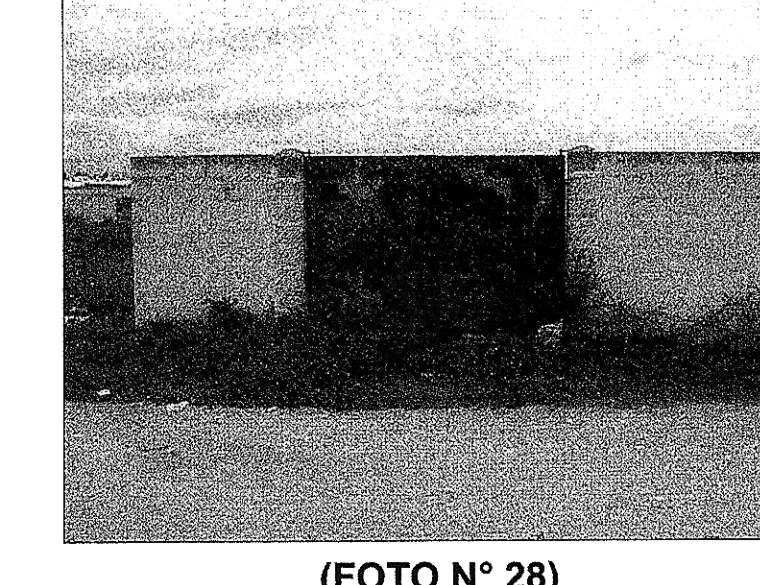
(FOTO N° 25)



(FOTO N° 26)



(FOTO N° 27)



(FOTO N° 28)